



3020 Display

Firmware upgrade procedure

A+T Instruments Ltd
235 Bentley Way
LYMINGTON
SO41 8JW UK
Tel: +44 1590 718182
email: info@AandTinstrument.com
www.AandTinstruments.com



Firmware upgrade

The A+T 3020 may have its internal firmware upgraded by linking through a Bluetooth enabled PC

Preparation

A terminal emulator program will be needed such as TeraTerm or HyperTerminal. The link to get Tera Term is <https://osdn.net/projects/ttssh2/releases/> and this is open source so free.

Download the latest version of 3020 firmware from the A+T Website (under Downloads) or if it is a custom version get it emailed from A+T.

The Bluetooth Uploader should also be downloaded from the A+T website. This consists of two files (the A+T Uploader and a file called InTheHand. These should be put together with the firmware file above into a single directory.

Connect to the 3020 with Bluetooth

In normal use the Bluetooth connection is turned off.

To turn this connection on:-

- Ensure unit is powered off

- Disconnect the Fastnet feed to the 3020 (disconnect either the green or white wire

- Power on the unit

The unit should then come up with PAIR on the display (after waiting a few seconds) and the serial number of the unit in the top line.

Now pair the PC with the 3020:-

- Devices & Printers

- Add a device

- Select the AT3020 identified by the serial number

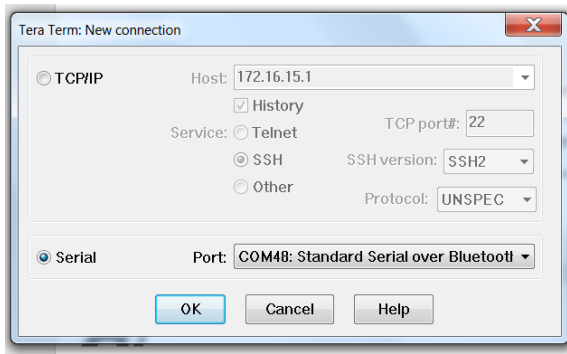
- Select to enter a pairing code which is 1234

- The PC should then connect to the 3020

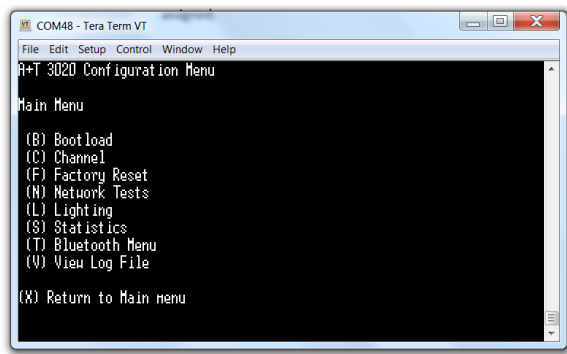
- Finally, right click on the successfully paired device in Devices & Printers. Then select Hardware and make a note of the COM port to which the 3020 has been assigned.

Open (instructions below are for Tera Term) terminal emulator.

- Select Serial and select the previously noted COM port:-



Once this is opened a blank screen appears so hit <cr> and the menu should be displayed:-



Now select B and then confirm. The 3020 will change to displaying LOAD which shows that it is ready to take the uploaded firmware.

Upload new firmware

Now run the A+T Bluetooth uploader and follow the instructions. The target 3020 should appear in the list of available devices after Find is selected. The uploader will ask for confirmation regarding the display (it is used when uploading an MFD) and this can be ignored/confirmed.

Once uploading is commenced then the addresses will update on the 3020 display until complete.

Once finished then reconnect that Fastnet feed and the 3020 will operate as normal with the updated firmware.